

CASE STUDY



PROJECT DETAILS

Project Name:

I-270 North – Lindbergh
Boulevard Bridge

Location:

St. Louis, MO Metro

Owner:

Missouri Department of
Transportation

General Contractor:

Millstone Weber

Engineer:

Parsons Transportation
Group

Product Manufacturer:

County Materials
Corporation

Date:

2021

Key Products:

Prestressed Bridge Girders

County Materials' Prestressed Bridge Girders Specified for Extended Service Life

Solutions: Prestressed bridge girders promote accelerated construction schedules and low life cycle cost

The I-270 North Project, coordinated by the Missouri Department of Transportation, called for the reconstruction and reconfiguration of the Lindbergh Boulevard Bridge. County Materials' Prestressed Bridge Girders were selected to replace the aging steel girders.

Prestressed bridge girders offer unmatched longevity. Their prestressed fabrication supports high load capacities through decades of harsh elements and heavy traffic. The Missouri Department of Transportation relied on the prestressed girders for their extended service life, which can reach up to 100 years with minimal maintenance.

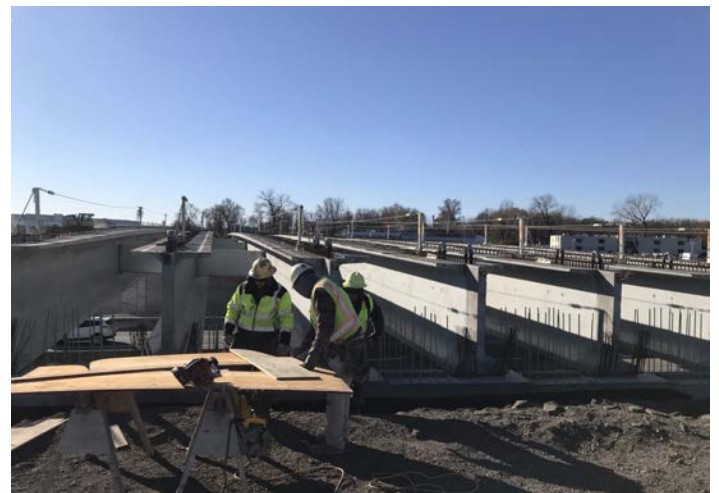
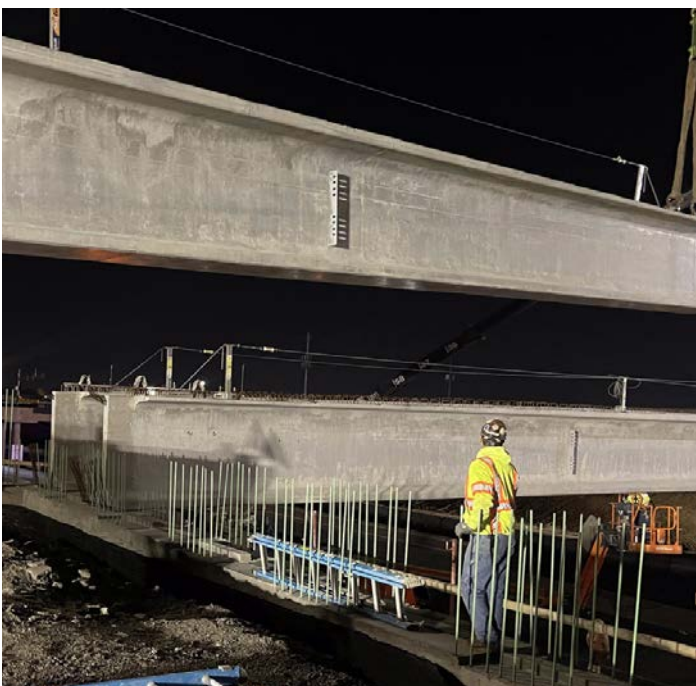
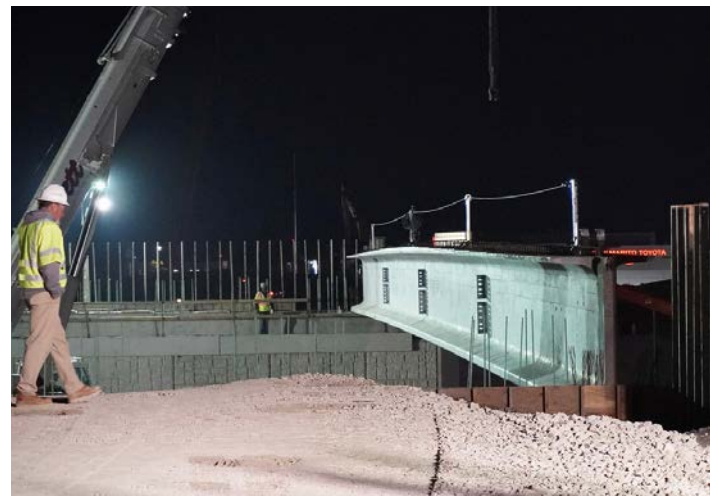
Continued on page 2.





Prestressed girders were specified for their efficient speed and ease of installation. During production, each bridge girder is prepared to be installed upon delivery. This was a significant advantage, as traffic closures were required for installation.

County Materials efficiently manufactured and delivered eight 157-foot-long prestressed bridge girders to update the Lindbergh Boulevard Bridge. Use County Materials' Prestressed Bridge Girders for your next project by contacting our Customer Service Team at (800) 242-7733.



//

The Missouri Department of Transportation relied on the prestressed girders for their extended service life, which can reach up to 100 years with minimal maintenance.

//